

**ATTACHMENT B**

**COMMUNITY CONSULTATION  
PRESENTATION – MARCH 2013  
CONCEPT PLAN**

## Overview

The City's Small Parks and Playgrounds Renewal Program is continuing to improve the quality of our open space and play experiences.

The City of Sydney is proposing to improve Reconciliation Park in Redfern.

A concept plan has been prepared for the site. We invite you to comment on the proposal.

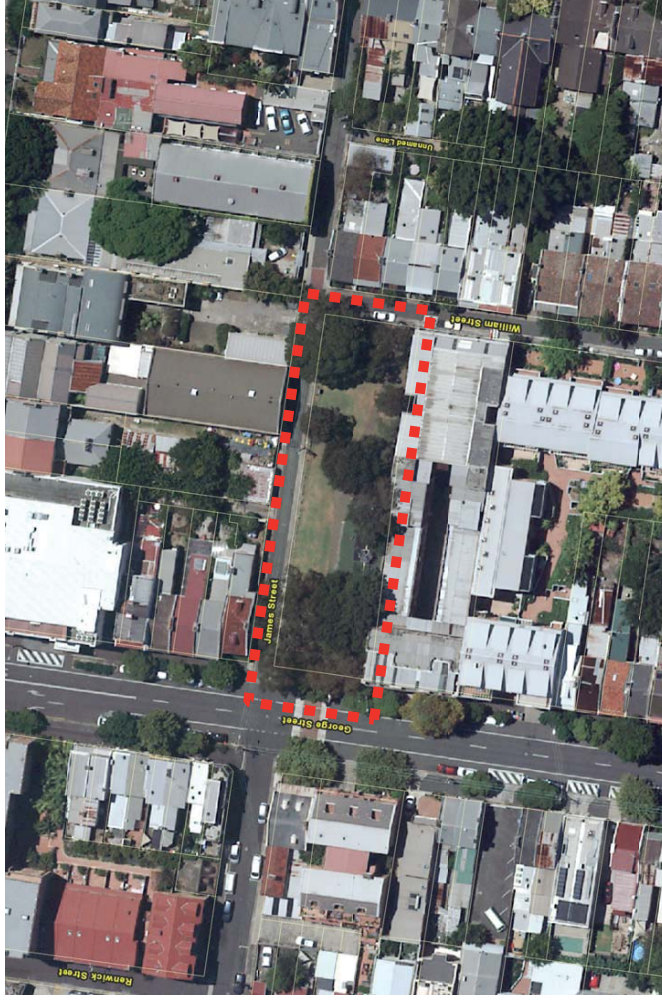
## Design rationale

An analysis of the site identified that some elements of the park work well. It is not intended to change these areas of the site.

For example, the middle of the park benefits from a clear northern aspect that allows sunlight into the park. The upgrade intends a variety of sunny and shaded spaces will be available to make the park enjoyable to use.

Whilst the playground upgrade is the most obvious change to the park, a number of functions will still be provided following the upgrade including:

- places for seating and passive recreation;
- open lawn areas for a variety of uses;
- maintain areas for dog walking; and
- an area where it will be possible for the community to do their own gardening.



Aerial photograph • Reconciliation Park

Site photos • existing conditions



Playground & central lawn area

Lawn area at William St end of park

Playground in centre of park

Narrow entry off George St

Underutilised terrace adjoining George St

# Reconciliation Park, Redfern • Concept Plan • Analysis of parks in the area

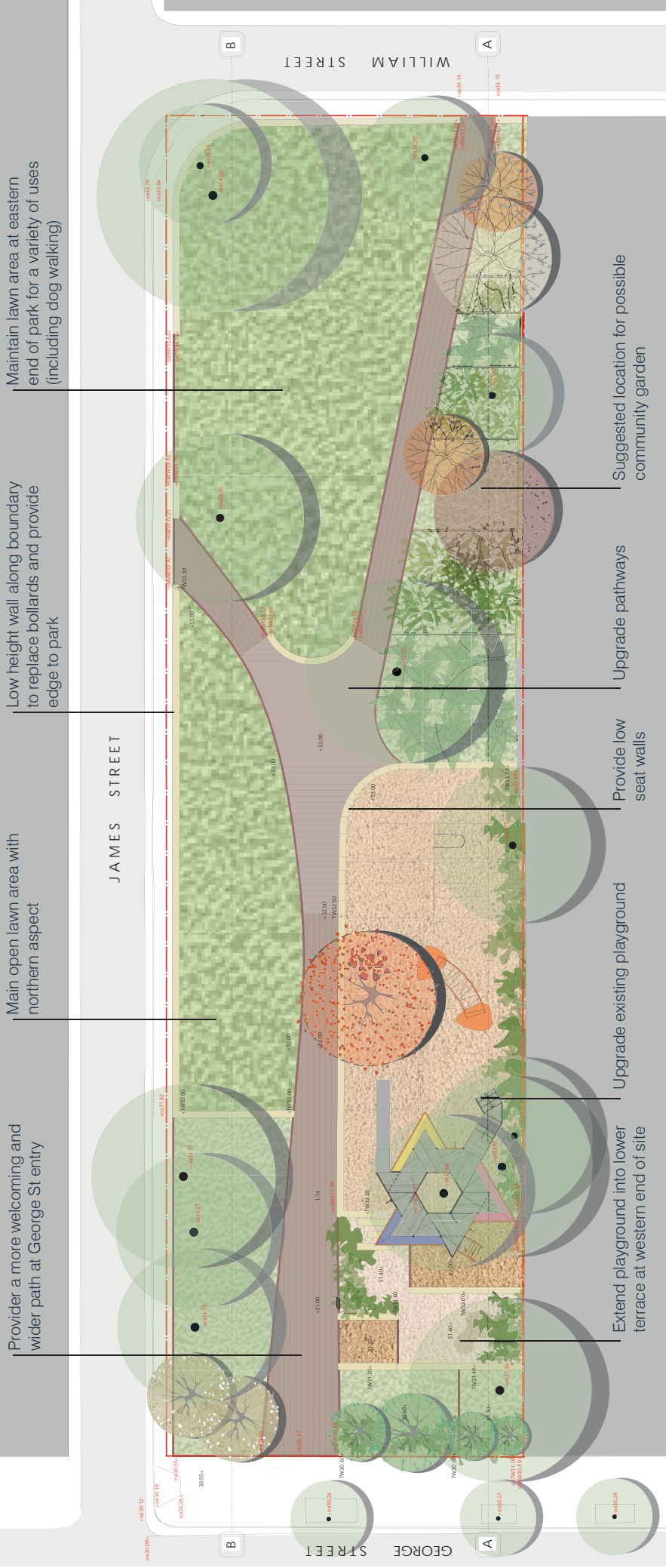
**LEGEND**

- 550m RADIUS FROM RECONCILIATION PARK - 10 MINS WALK
- 250m RADIUS FROM RECONCILIATION PARK - 5 MINS WALK
- LOCAL PARKS
- NEIGHBOURHOOD PARKS
- REGIONAL / DISTRICT PARKS



approx. distance	Park Name	Approx. Distance	Play Provisions
0m	<b>A RECONCILIATION PARK</b>	520m	<ul style="list-style-type: none"> <li>Play Provisions:                             <ul style="list-style-type: none"> <li>- Dual swing set (toddlers &amp; belt)</li> <li>- Climbing structure</li> <li>- Slide</li> <li>- Park seating</li> <li>- Plantings of community garden.</li> </ul> </li> </ul>
85m	<b>B PRINCE ALFRED PARK</b>	645m	<ul style="list-style-type: none"> <li>Play Provisions:                             <ul style="list-style-type: none"> <li>- Tennis centre - 5 x floodlit tennis</li> <li>- Ship &amp; Car Steering</li> <li>- 2 x flood lit basketball courts</li> <li>- 2 x play grounds - traditional &amp; creative</li> <li>- Dual swing set</li> <li>- Bouncing pole</li> <li>- Basket &amp; Ball play item</li> <li>- Play sculpture</li> <li>- Community gardens on site</li> <li>- Park benches</li> <li>- Park seating</li> <li>- Park bins</li> <li>- Park BBQs &amp; Picnic areas</li> <li>- Community garden &amp; toddler pool</li> <li>- Natural Shade</li> <li>- Greenway paths</li> <li>- Cycle routes &amp; parking</li> <li>- Natural Shade</li> <li>- Natural Shade</li> <li>- Park seating</li> <li>- Bins</li> <li>- Toilets</li> <li>- Off leash dog area</li> </ul> </li> </ul>
360m	<b>C STRICKLAND PARK PLAYGROUND</b>	700m	<ul style="list-style-type: none"> <li>Play Provisions:                             <ul style="list-style-type: none"> <li>- Fenced playground</li> <li>- Dual swing set (toddlers &amp; belt)</li> <li>- Rocker</li> <li>- Slide</li> <li>- Climbing</li> <li>- Park seating</li> <li>- Park provision</li> <li>- Park Seating &amp; Benches</li> <li>- Bins</li> <li>- Natural shade</li> </ul> </li> </ul>
370m	<b>D REDFERN PARK</b>	730m	<ul style="list-style-type: none"> <li>Play Provisions:                             <ul style="list-style-type: none"> <li>- 2 x play areas - traditional and creative</li> <li>- 2 x spring chickens (multirocker)</li> <li>- Rockers</li> <li>- Side</li> <li>- Climbing</li> <li>- Park seating</li> <li>- Park provision</li> <li>- Park Seating &amp; Benches</li> <li>- Bins</li> <li>- Natural shade</li> </ul> </li> </ul>
	<b>E DOUGLAS STREET PLAYGROUND</b>		<ul style="list-style-type: none"> <li>Play Provisions:                             <ul style="list-style-type: none"> <li>- Dual swing set - toddler &amp; belt</li> <li>- Climbing structure</li> <li>- Slide</li> <li>- Park seating</li> <li>- Plantings of community garden.</li> </ul> </li> </ul>
	<b>F PEACE PARK PLAYGROUND</b>		<ul style="list-style-type: none"> <li>Play Provisions:                             <ul style="list-style-type: none"> <li>- Fenced playground</li> <li>- Dual swing set (toddlers &amp; belt)</li> <li>- Climbing</li> <li>- Park seating</li> <li>- Park provision</li> <li>- Park Seating &amp; Benches</li> <li>- Bins</li> <li>- Natural shade</li> </ul> </li> </ul>
	<b>G EDDIE WARD PARK</b>		<ul style="list-style-type: none"> <li>Play Provisions:                             <ul style="list-style-type: none"> <li>- Toddler play area</li> <li>- Adventure play</li> <li>- Swings</li> <li>- Climber</li> <li>- Skate bowl</li> <li>- Ping Pong table</li> <li>- Swing bridge</li> <li>- Cubby house</li> <li>- Park provision</li> <li>- Rocker</li> <li>- Slide</li> <li>- Climbing</li> <li>- Park seating</li> <li>- Natural shade</li> <li>- Open lawn area</li> <li>- Park provision</li> <li>- Park provision</li> <li>- Park provision</li> <li>- Park provision</li> <li>- Park provision</li> <li>- Park provision</li> <li>- Park provision</li> </ul> </li> </ul>
	<b>H DANIEL DAWSON RESERVE</b>		<ul style="list-style-type: none"> <li>Provisions:                             <ul style="list-style-type: none"> <li>- Dual swing set - 2x belt</li> <li>- Swings</li> <li>- 2 x play areas - traditional and creative</li> <li>- 2 x spring chickens (multirocker)</li> <li>- Rockers</li> <li>- Side</li> <li>- Climbing</li> <li>- Park seating</li> <li>- Park provision</li> <li>- Park Seating &amp; Benches</li> <li>- Bins</li> <li>- Natural shade</li> </ul> </li> </ul>

# Reconciliation Park, Redfern • Concept Plan • Site Plan



Maintain lawn area at eastern end of park for a variety of uses (including dog walking)

Low height wall along boundary to replace bollards and provide edge to park

Main open lawn area with northern aspect

Provide a more welcoming and wider path at George St entry

Suggested location for possible community garden

Upgrade pathways

Provide low seat walls

Upgrade existing playground

Extend playground into lower terrace at western end of site

## LEGEND & SCHEDULES

**EXISTING TREES TO BE REMOVED**

**EXISTING TREES TO BE RETAINED**

**NEW FEATURE SHADE TREE**  
*Platanus chinensis*

**NEW FRUIT ACCENT TREE**  
*Citrus sinensis*

**NEW ACCENT TREE**  
*Prunus cerasifera*

**NEW ACCENT TREE**  
*Ficus assimilis*

**NEW INFORMAL BARRIER TREE**  
*Elaeocarpus reticulatus*

**NEW RAIN GARDEN TREE**  
*Melaleuca quinquenervia*

**TURF**

**LOW SHRUB/GROUND COVER PLANTING**

**SHRUB PLANTING**

**COMMUNITY GARDEN PLANTING**  
(to be confirmed in community consultation)

**STEEL TRELLIS FOR VINES** (for community garden)

**LIGHT EDGED GREEN BED DIVIDER** (for community garden)

**RECYCLED BRICK PAVING**

**RUBBER SURFACING** (specified and proposed to impact attenuating surfaces)

**SANDSTONE EDGING**

**SANDSTONE WALLS AND SEAT WALLS**

**RANKED TIMBER DECK & TIMBER ROOF**  
(circular tables for play attachments and existing trees)

**ROPE TUNNEL CLIMB**

**SPIRAL PLAY STAIRS**

**CURVED TUNNEL SLIDE**

**MONKEY BARS WITH PLATFORMS**

**STILL BALANCE CHALLENGE**

**SWING**

**TODDLER SWING**

**TIMBER / STONE ANIMALS**

**EXTENT OF FALLZONE**

**SITE BOUNDARY LINE**

**EXISTING LEVELS**  
+0015.40

**NEW LEVELS**  
+18.40

## Concept Plan • proposed layout

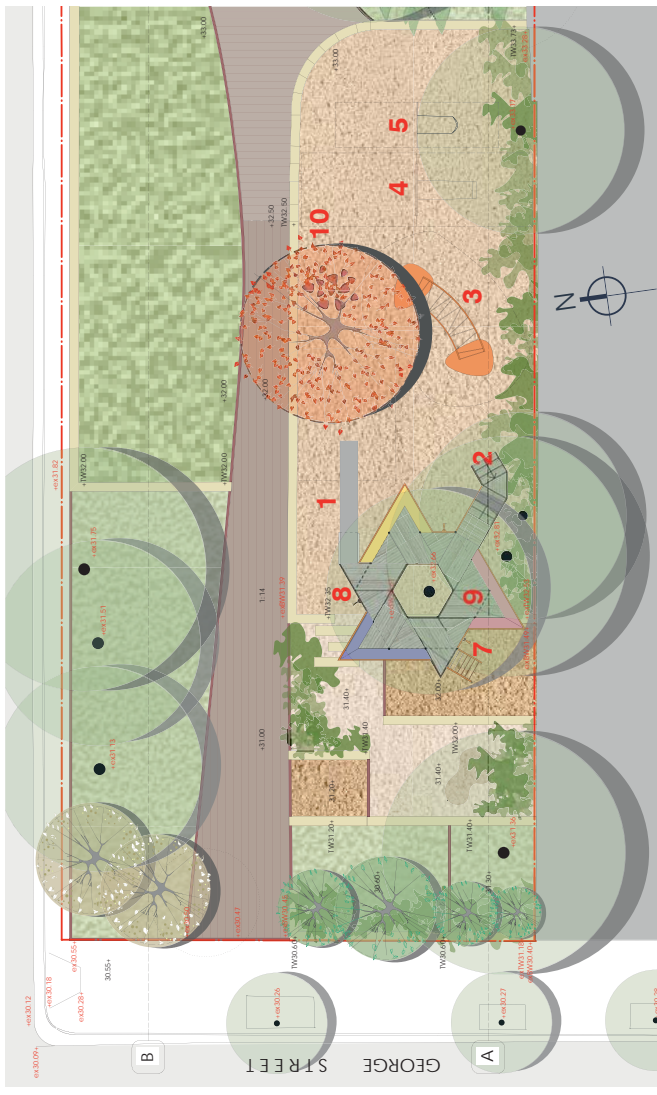
## Playground upgrade

The City has a reputation for providing creative and unique playgrounds for children living in the inner city and we are pleased to provide a new play space for the children of Redfern.

Thank you to the children of Darlington Public School who gave us their great ideas for the new playground.

The new playground design is the most significant change to the park.

The location and extent of the existing playground was considered. The terraced area that fronts onto George Street was identified an underutilised space. The upgrade proposes to extend the play space into this area.



3. Monkey bars



4. & 5. Swings



6. Timber / stone animals



8. Spiral play stairs



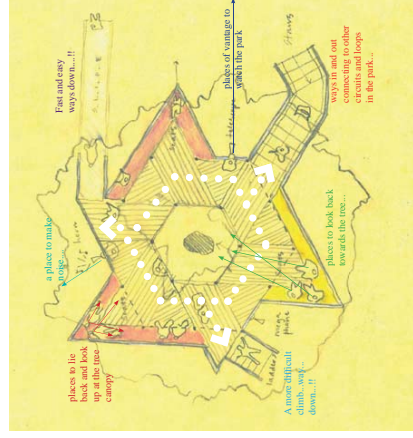
2. Rope tunnel



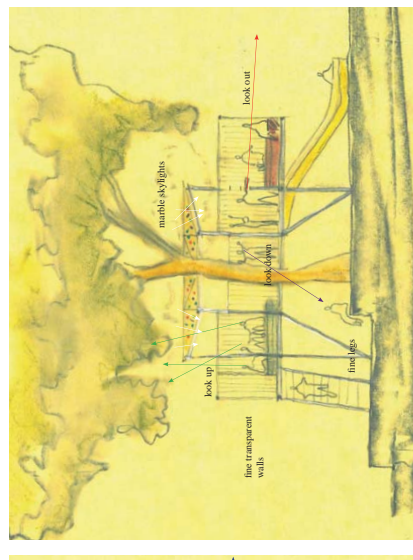
7. Rope climbing attached to deck



10. Still balance challenge



9. Plan of raised deck in playground



9. Section through for raised deck in playground

## Examples of possible playground facilities

1. Curved tunnel slide



# Reconciliation Park, Redfern • Concept Plan • Improvements & Materials

## The improvements will include:

- Outdoor seating and spaces for relaxation
- Extension of the existing playground and new facilities
- Improved entry to the park from George Street
- A rain garden at the bottom of the park
- Provision for a possible future community garden at the eastern end of the park
- New tree and shrub planting

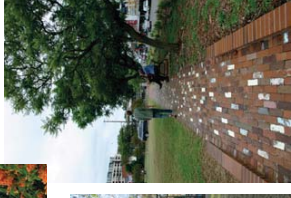
Materials & finishes considered



Trellis and vines



Additional shade trees in playground



Glazed / recycled brick seat walls



Recycled brick paving



## Next Steps

We will use your feedback on the concept plan to develop the detailed design.

The draft concept plan is open for comments until **22 March 2013**.

Send your comments to:

email - [mbrandon@cityofsydney.nsw.gov.au](mailto:mbrandon@cityofsydney.nsw.gov.au)

fax - 9265 9566

post - GPO Box 1591

Sydney NSW 2001

You can also see the concept plan at:  
[www.sydneyyoursay.com.au](http://www.sydneyyoursay.com.au)

### Postal Address

City of Sydney  
GPO Box 1591 Sydney NSW 2001

### Website

You can also view these plans and make comment online at:

[www.sydneyyoursay.com.au](http://www.sydneyyoursay.com.au)

### General Enquires

Tel 9265 9333

[council@cityofsydney.nsw.gov.au](mailto:council@cityofsydney.nsw.gov.au)

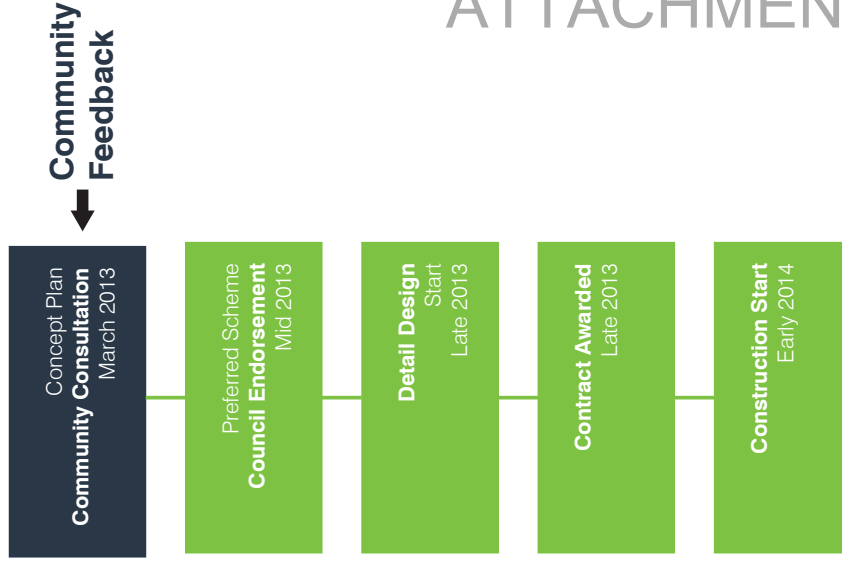
[www.cityofsydney.nsw.gov.au](http://www.cityofsydney.nsw.gov.au)

If you would like to speak with a Council officer about this project, you can contact

Mark Brandon, Design Manager  
on 9265 9260 or at

[mbrandon@cityofsydney.nsw.gov.au](mailto:mbrandon@cityofsydney.nsw.gov.au)

## Project Timeline



**WE ARE HERE** →

← **Community Feedback**

# ATTACHMENT B